

ZRG-F DATASHEET

Sensor Partners BV

📍 James Wattlaan 15
5151 DP Drunen
The Netherlands

☎ +31 (0)416 - 37 82 39

✉ info@sensorpartners.com

🌐 sensorpartners.com

Sensor Partners BVBA

📍 Z.1 Researchpark 310
B-1731, Zellik
Belgium

☎ +32 (0)2 - 464 96 90

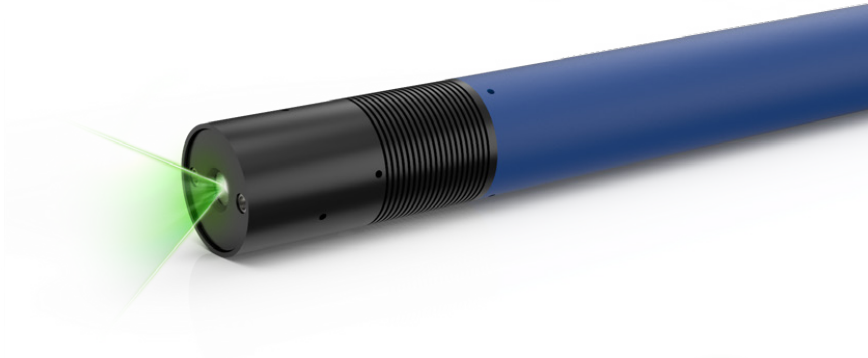
✉ info@sensorpartners.com

🌐 sensorpartners.com

ZRG-F

It doesn't get any brighter!

It does not get any brighter! The ZRG-F is a diode-pumped (DPSS) solid-state laser that emits 532nm green light. As a line laser, it has so far been unbeatable when it comes to projecting long, bright green lines, for example for the sawmill or for many other textile applications. But it is also used in the natural stone industry due to its robust design. Thanks to the integrated wide-range power supply, it is ready to use and can be easily operated with the usual voltage supply. We offer the focusable version in four different power classes, from 5mW to 40mW.

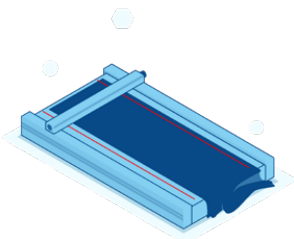


Wavelength: 520 nm

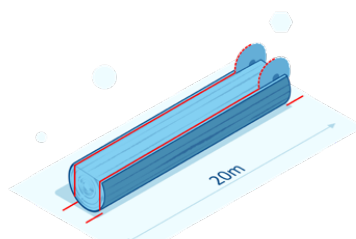
- 
 Easy Installation
- 
 Output power up to 40 mW
- 
 Shock resistant
- 
 IP 65

Highlights

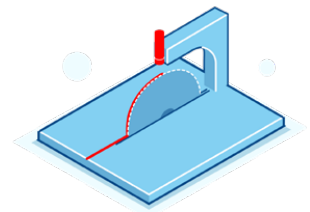
- Green laser for extra long lines and best visibility
 - Optical output power up to 40mW/532nm
- Adjustable focus
 - Large cooling surface for optimal heat dissipation
- Integrated power supply with high immunity to interference
 - Dimensions: Ø 40mm x 329mm



Textile positioning table



Long homogenous projection



Circular Saw

Order Code

Z??	-	RG	-	-F	-	532	-	?
Output power		Product family		F-focusable		Wavelength		Optic

System specifications

Wavelength	nm	532
Output power	mW	up to 40
Laser operation mode		APC with current limiter

Electrical specifications

Operating voltage		90 - 265 VAC
Protection		IP65
Connection		Power plug
Electrical isolation		Potential-free housing

Optical specifications

Optics		Line, dot circular
Focus range	mm	focusable
Laser class		2M

Environmental conditions

Operating temperature	°C / °F	0 °C up to +35 °C
-----------------------	---------	-------------------

Mechanical specifications

Dimensions	mm	329 x 40 Ø
Material		Aluminium, powder-coated Optic head: anodized aluminium (black)