

HR50 DATASHEET

Sensor Partners BV

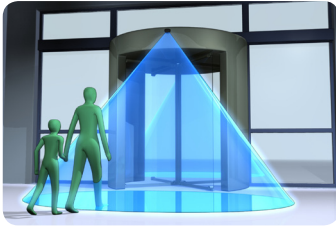
James Wattlaan 15
5151 DP Drunen
The Netherlands

+31 (0)416 - 37 82 39
info@sensorpartners.com
sensorpartners.com

Sensor Partners BVBA

Z.1 Researchpark 310
B-1731, Zellik
Belgium

+32 (0)2 - 464 96 90
info@sensorpartners.com
sensorpartners.com



HR50

Activation

Bi-Directional Microwave Door Activation

User-friendly overhead microwave sensor suitable for a variety of door types at mounting heights of up to 4m

- Large Detection Area**
 Detection area of up to 4m wide x 2m deep¹ ensures timely door activation when doors are approached by fast moving traffic
¹ Installation height of 2.2m
- Simple to Install**
 Easy installation to suit all environments through detection area adjustment and sensitivity potentiometer
- Attractive Design**
 Small and neat so this sensor will enhance and complement all door types
- Economical**
 Cost effective pricing to suit all market needs

HR50

Activation



Technical Specification

Accessories



WC_HR50
Weather cover for the
HR50 sensor

Model	HR50 Pedestrian Door Activation	
Detection Method	K-Band 24.125Ghz - Microwave Motion Detection	
Installation Height	Max 4000mm (13.1ft)	
Sensor Dimensions	120mm (W), 70mm (H), 41.5mm (D)	
Pattern Adjustment	Width Adjustment: Antenna Adjustment left/right 0°- 30° in each direction)	
	Width Adjustment: Sensitivity Adjustment (Potentiometer)	
	Depth Adjustment: Antenna adjustment up/down 0°- 90° in 6° steps	
	Depth Adjustment: Sensitivity Adjustment (Potentiometer)	
IP Rating	54	
Power Supply	12 to 30V DC, 12 to 24V AC	
Current Consumption	40mA (DC24V)	
Power	< 1.4W	
Transmitting Power	16 dBm	
Relay Output	1C Type Relay (One Switching Contact)	
Relay Hold Time	1.2sec	
Max. Switching Power	125V AC 0.5A, 24V DC 1A	
Max. Switching Voltage	125V AC / 60V DC	
Max. Switching Current	1A	
Min. Detection Speed	0.3 m/s	
LED Indication	Power On	= Green
	Detecting	= Red
	Initialization after power on	= Green/Red Flashing
Operating Temperature	-30°C to +55°C, (-22°F to 131°F)	
Weight	91g + 160g(box)	
Available Colours	Black: Product Code	= HR50
Accessories Provided	Connection Cable	
	Mounting Template	
	Mounting Screws	

Detection Area at 2.2m Installation Height

